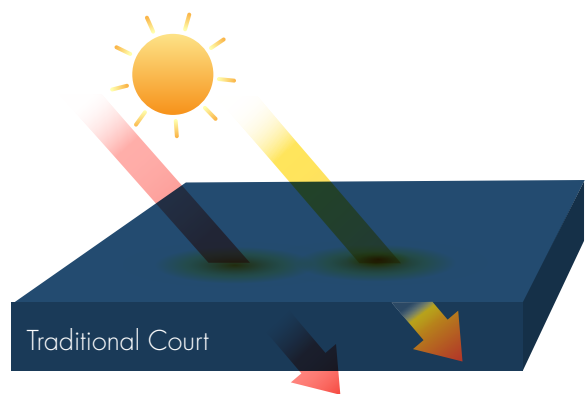
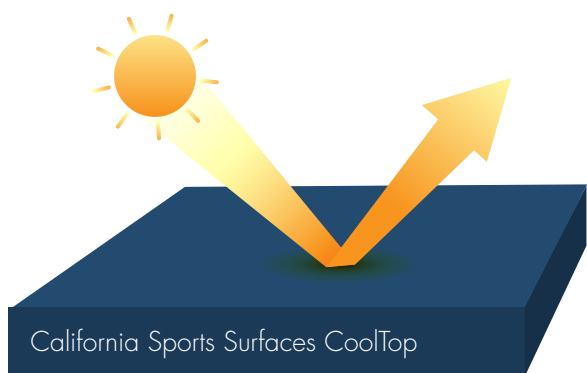


COOLTOP®

STAY COOLER, PLAY LONGER

California Sports Surfaces CoolTop® is specially formulated with IR reflective pigments that help reduce surface temperature through solar reflectance (when compared to standard competitor court surfaces), assisting in overall player comfort. Tested in real-world environments.



MULTI-SPORT SURFACE SOLUTION FOR:



NETBALL



TENNIS



PICKLEBALL



BASKETBALL



MULTI-PURPOSE



CALIFORNIA®
SPORTS SURFACES


TESTED IN REAL WORLD ENVIRONMENTS

2023's Yeppoon Pickleball Festival was hosted at the complex between the 14th and the 23rd of July, welcoming over 100 players from across Australia and NZ for 10 days of fun, competitions, coaching and tournament play.

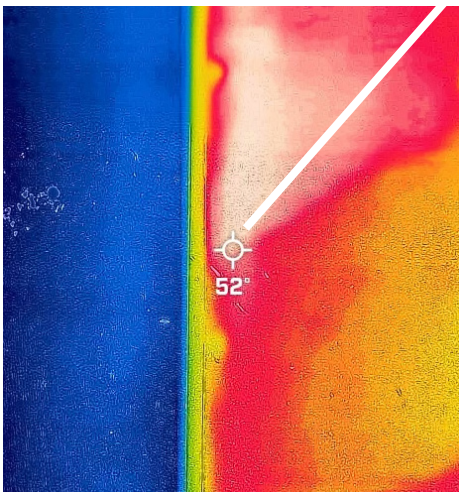
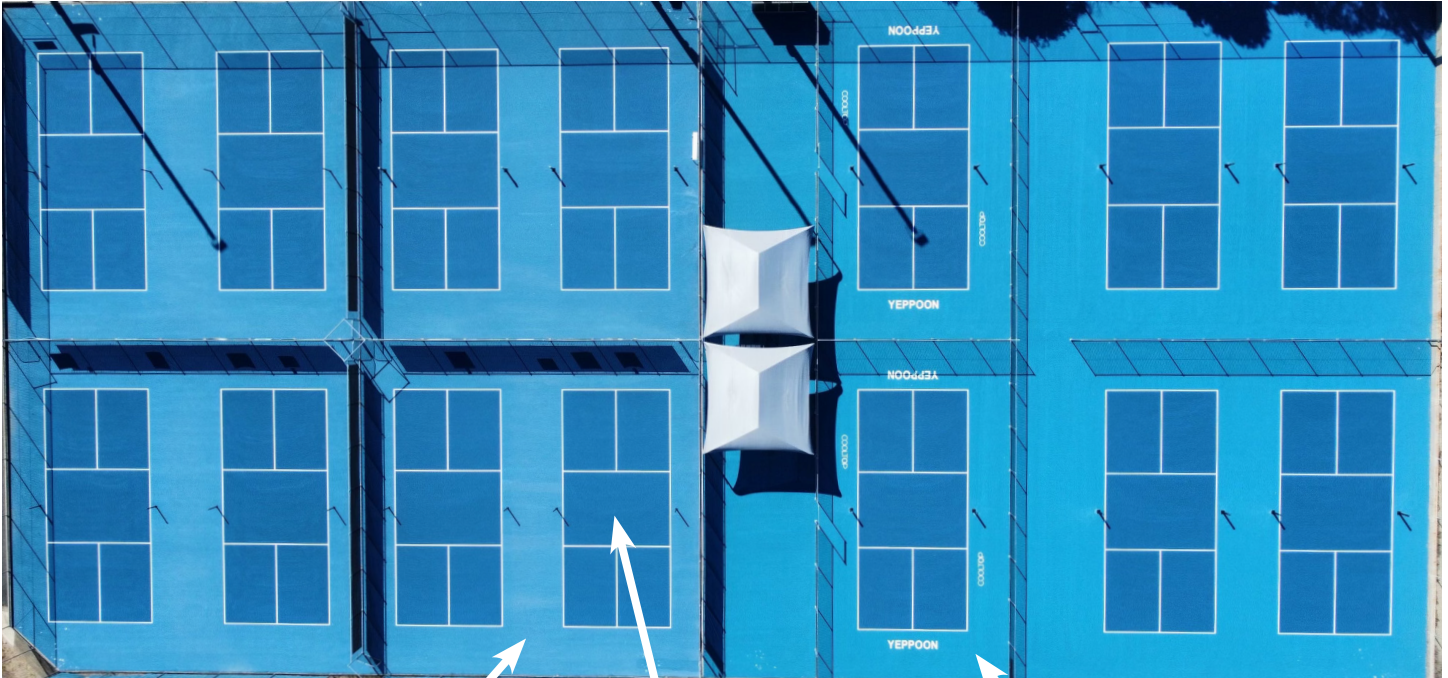
Despite being played in July, Yeppoon still frequently has temperatures above 86°F (30°C). Prior to the tournament, CoolTop was installed on their feature acrylic courts to reduce the surface temperature (via solar reflectance), with the goal of assisting in overall player comfort.

The 6 feature courts to the right of the marquees were surfaced with CoolTop in Nordic and Ice Blue colors. The 8 courts to the left were surfaced with standard Blue outbounds and CoolTop Nordic Blue inbounds. The court surface temperatures shown below were recorded on Friday 21st of July, at 1.30pm – with the ambient temperature of 86°F (30°C):

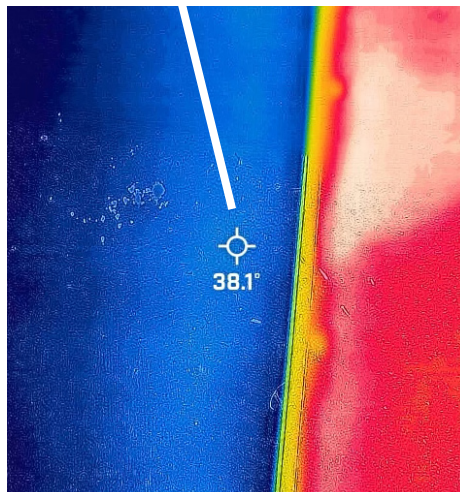
Existing Blue: 125.6°F (52°C); Nordic Blue: 100.6°F (38.1°C); Ice Blue: 93.9°F (34.4°C).



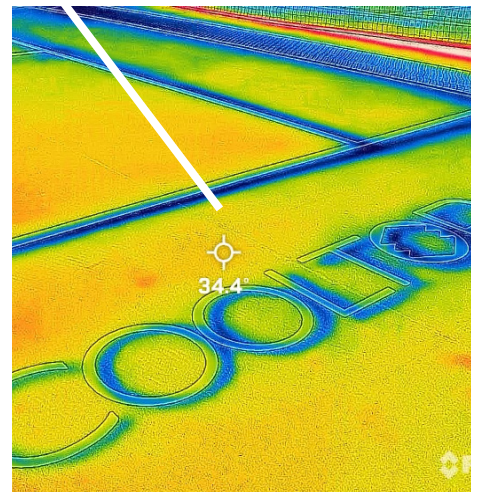
**COOLTOP SHOWED
TEMPERATURES
33%
LOWER
THAN FOR A
SIMILAR COLOR IN
STANDARD COATING**



**EXISTING BLUE
OUTBOUNDS**



NORDIC BLUE INBOUNDS



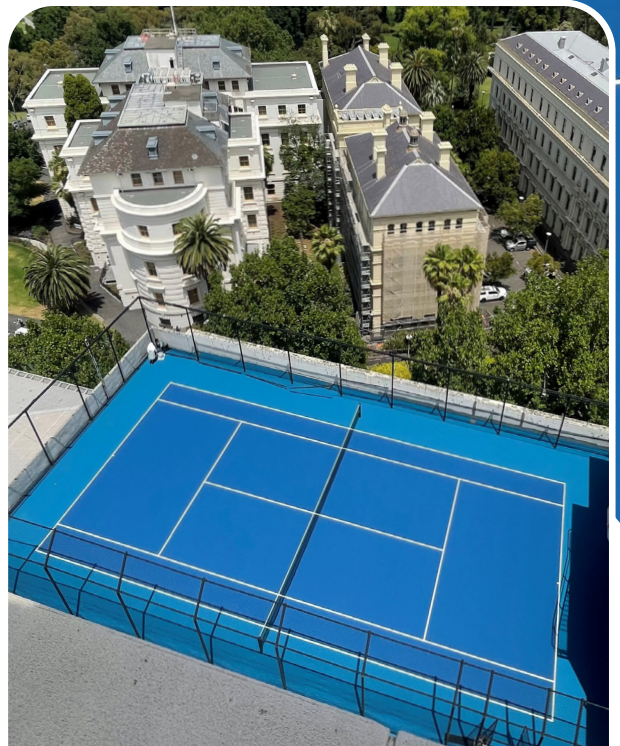
ICE BLUE OUTBOUNDS



Having played pickleball outdoors on many surfaces and now experiencing playing on a surface that has reflective pigments, **i feel the change, it takes the heat off me so i can put it into my play.**

KEL RASMUSSEN
FORMER DIRECTOR - PICKLEBALL ASSOCIATION AUSTRALIA

- With Solar Reflective ratings 20-30% higher than standard court coatings, our CoolTop coatings will retain less heat and help reduce the temperature of your court. Temperature reductions will vary depending on location, court color and site conditions.
- Reduces the impact of heat islands and banks, which can develop at large multicourt sports facilities.
- Colors have been developed specifically to maximize surface heat rejection, whilst offering an aesthetically pleasing look.
- Surface speed performance and long-term durability match California Sports Surfaces quality standards.



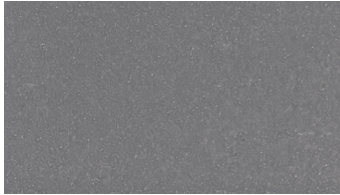
CoolTop is intended as a finish on athletic surfaces and is compatible with all our range of systems:

- Hard court
- Cushion mat
- Liquid rubber applied

Illustration shows CoolTop over Rebound Ace HSA Mat System.

COOLTOP®

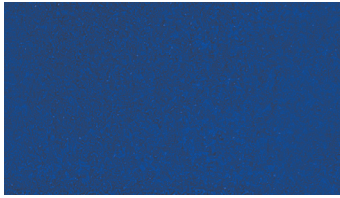
AVAILABLE COLORS



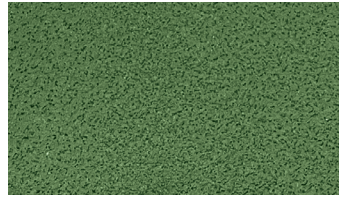
STIRLING GREY



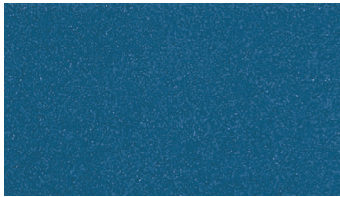
STEEL GREY



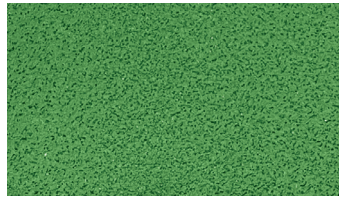
NORDIC BLUE



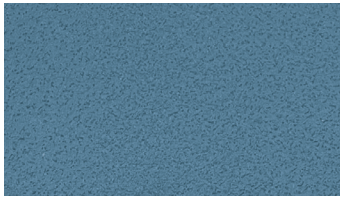
FOREST GREEN



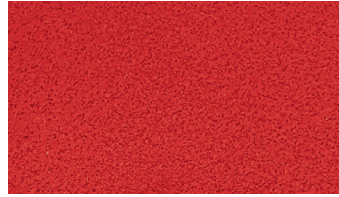
ICE BLUE



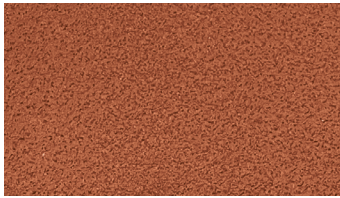
MINT GREEN



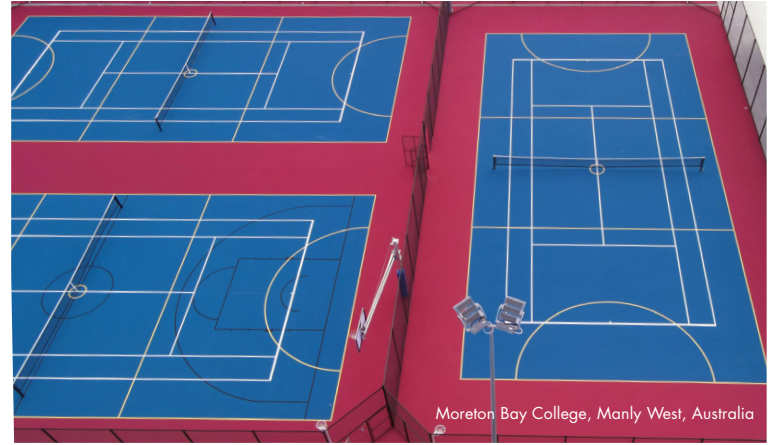
BELLS BLUE◆



RUBY RED◆



EARTH◆



On-screen and printer color representations may vary from actual product colors. Diagrams not to scale.

◆ Custom colors, produced on a made to order basis, available for a charge.