

REBOUND



ace®

Hawkesdale Football Club
Australia

**CONSISTENCY,
COMFORT &
PLAYABILITY**

REBOUND *ace*

Davis Cup 2024
Humo Arena, Tashkent,
Uzbekistan

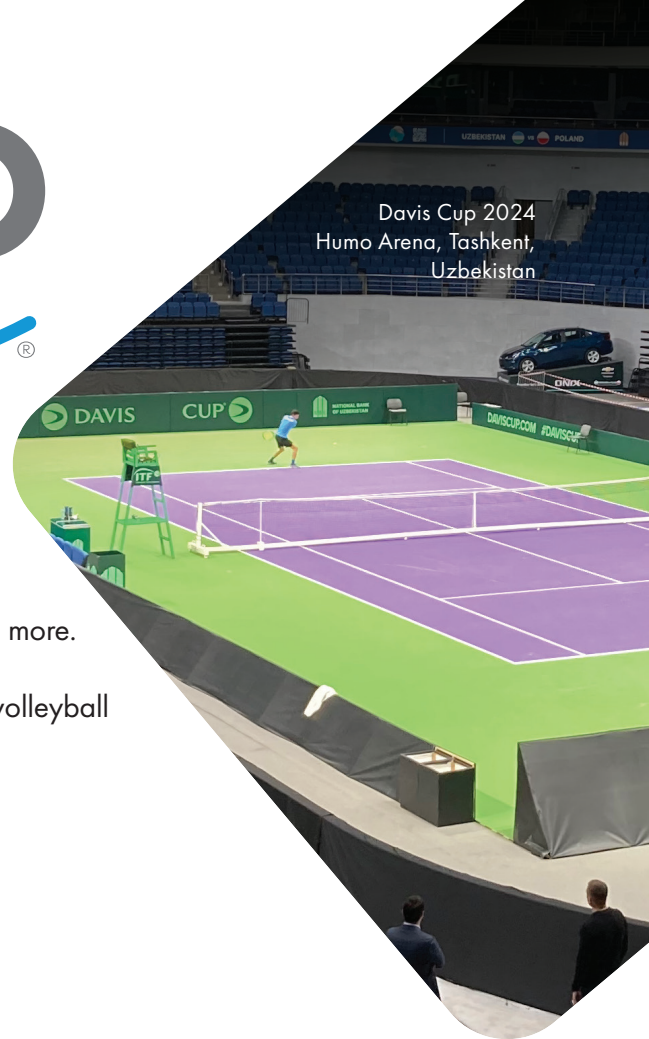
MAKE YOUR PROJECT POP

Rebound Ace® sport surface systems has served the international market for decades with high profile events such as the Australian Open (from 1988 to 2007), ATP & WTA tournaments, Billie Jean King Cup, various Davis Cup venues, the Asian Games in Incheon, South Korea and more.

Since 1977, competitive sports like tennis, netball, pickleball, basketball, volleyball and badminton have benefited from our surface and coating options.

REBOUND ACE® SURFACES ARE AVAILABLE IN THESE ITF COURT PACE RATING CATEGORIES

They can also be customized based on your personal preferences.



MULTI-SPORT SURFACE SOLUTIONS FOR:



NETBALL



PICKLEBALL



TENNIS

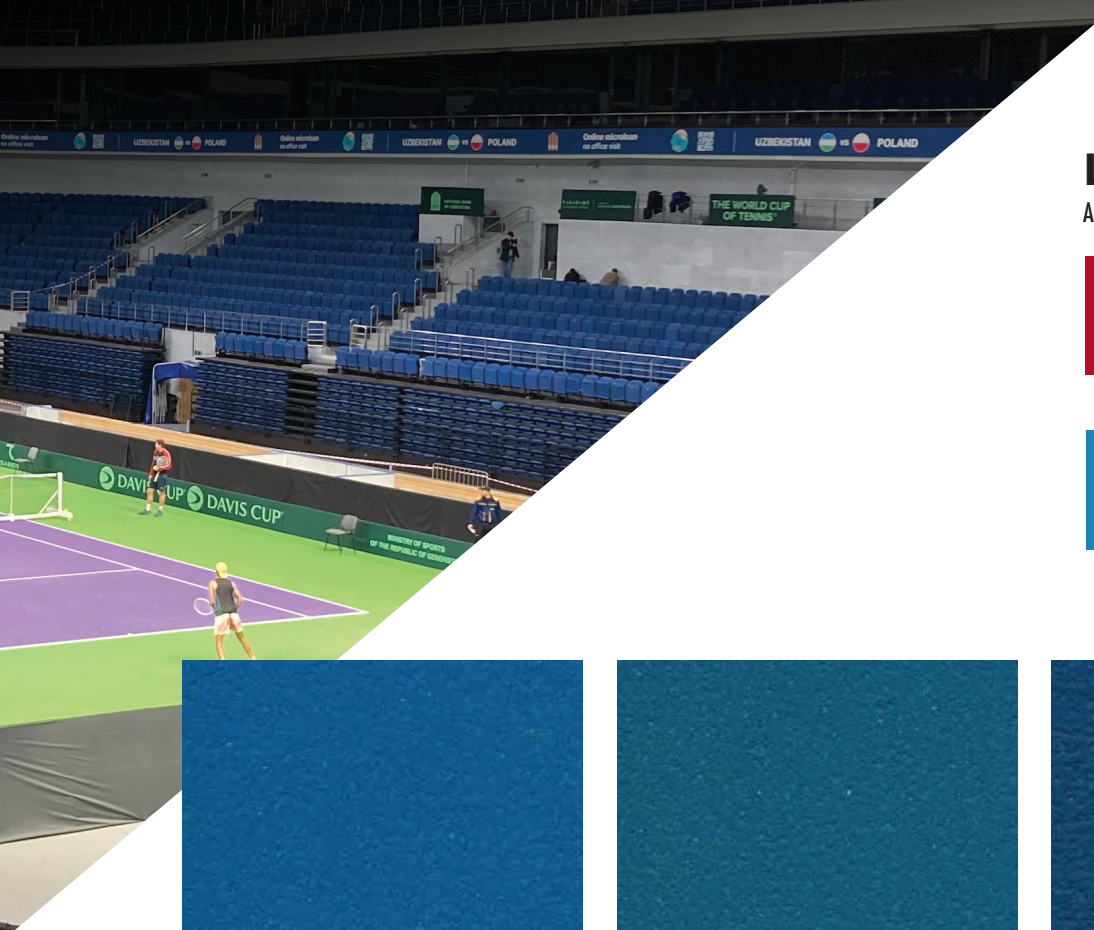


BASKETBALL



MULTI-PURPOSE

THE ULTIMATE
LEVEL OF
CUSHIONED
COMFORT
AND SHOCK
ABSORBENCY



LINE PAINT

Also available in White.



RED



ORANGE



YELLOW



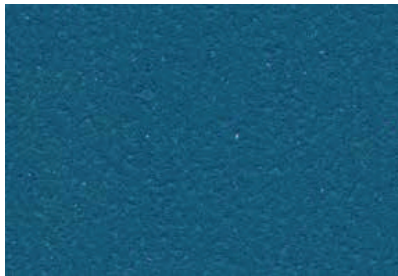
BLUE



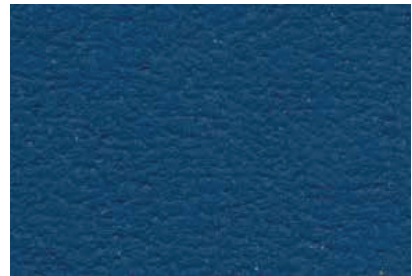
BLACK



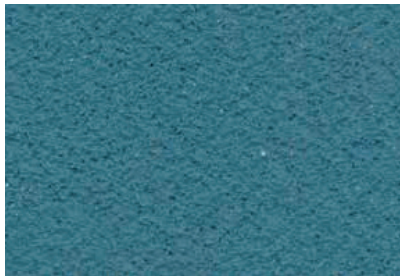
BYRON BLUE



OCEAN BLUE



ROYAL BLUE



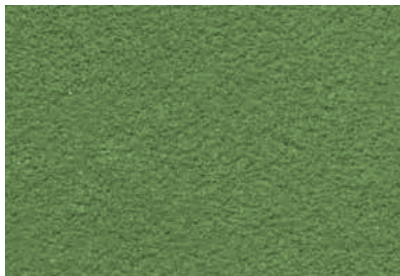
DENIM BLUE



MID GREY



TOUR PURPLE



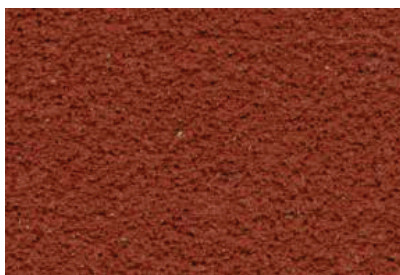
LIGHT GREEN



GRASS GREEN



MOSS GREEN



TERRACOTTA

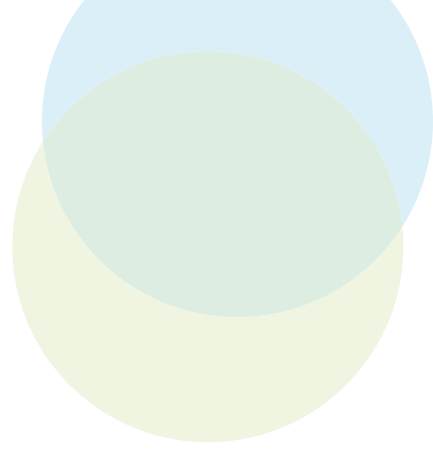


OUTBACK CLAY



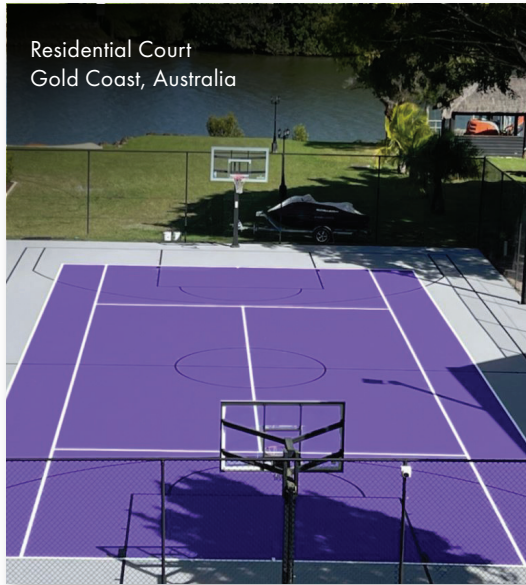
TAN

Chips on this card may vary in color and texture from the actual product. Special colors are available at a higher price based on pigments needed and production quantities.



CUSHIONED COMFORT & PLAYABILITY

Rebound Ace offers advanced multi-layered sports surface systems designed for optimal performance and player safety. Our cushioned systems help reduce leg, ligament, and lower back strain, minimizing the risk of injuries while enhancing comfort during play. For those seeking a traditional playing experience, Rebound Ace also offers hard court systems that deliver exceptional durability and consistent ball bounce. Whether for professional or recreational use, Rebound Ace provides the ideal balance of durability, resilience, and shock absorption.



AFFILIATIONS



OUR COMMITMENT TO QUALITY

Since 1953, California Sports Surfaces has set the industry standard, providing customers globally with a premier offering of acrylic surface systems.

From professional tournaments to neighborhood courts, CSS and its iconic brands – DecoTurf®, Plexipave®, Rebound Ace®, CoolTop®, Plexitrac®, and Premier Sports Coatings® – deliver cutting-edge surface technology that meets the demands of athletes at every level. CSS is dedicated to evolving the game of play through innovation, performance, and unmatched quality.

