

REBOUND *ace*

**CONSISTENCY,
COMFORT &
PLAYABILITY**

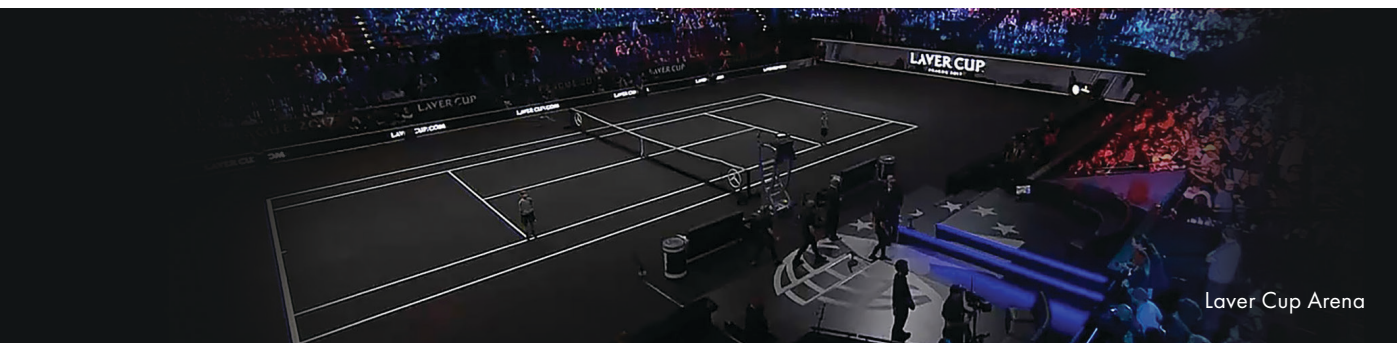
"Bellawyn" w, Victoria, Australia



RAISE THE BAR WITH REBOUND ACE

SERVING THE INTERNATIONAL MARKET SINCE 1977

The world's finest tournaments trust Rebound Ace for quality sports surfaces. Rebound Ace ITF Certified surfaces have been featured at the Australian Open (from 1988 to 2007), ATP & WTA tournaments, Billie Jean King Cup, various Davis Cup venues, the Asian Games in Incheon, South Korea and more.



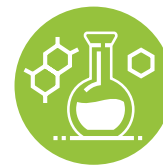
OPTIMAL PERFORMANCE

Our advanced multi-layered sports surface systems designed for optimal performance.



PROMOTES JOINT WELLNESS

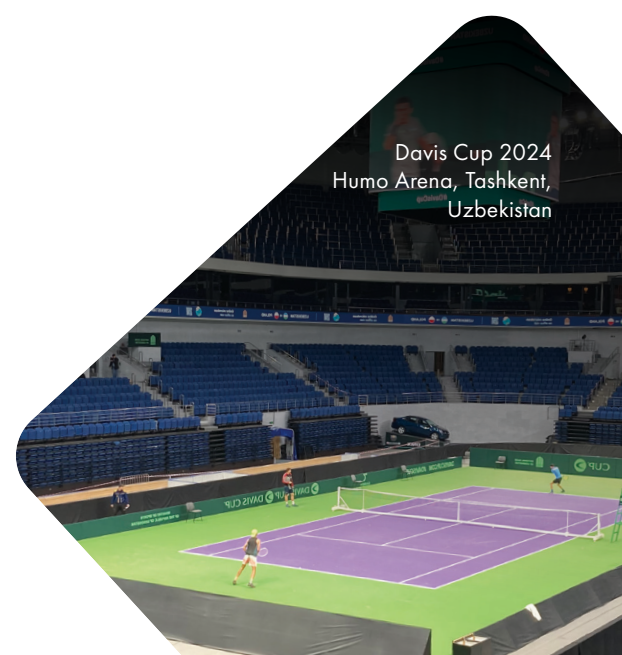
We're advocates of athletes' physical health. Rebound Ace surfaces were created with the perfect combination of cushion and playability.



EXCLUSIVE COLOUR TECHNOLOGY

Your imagination is the limit. We offer vibrantly coloured topcoats that make your project pop.

AFFILIATIONS



Davis Cup 2024
Humo Arena, Tashkent,
Uzbekistan

PROVIDING
HIGH-QUALITY,
DURABLE
SURFACES
THAT SUPPORT
ATHLETES AT
EVERY LEVEL
SINCE 1977.

REBOUND
ace[®]

ABOUT REBOUND ACE

Rebound Ace offers advanced multi-layered sports surface systems designed for optimal performance and player safety. Our cushioned systems help reduce leg, ligament, and lower back strain, minimizing the risk of injuries while enhancing comfort during play. For those seeking a traditional playing experience, Rebound Ace also offers hard court systems that deliver exceptional durability and consistent ball bounce. Whether for professional or recreational use, Rebound Ace provides the ideal balance of durability, resilience, and shock absorption.



NETBALL



PICKLEBALL



TENNIS



BASKETBALL



MULTI-PURPOSE

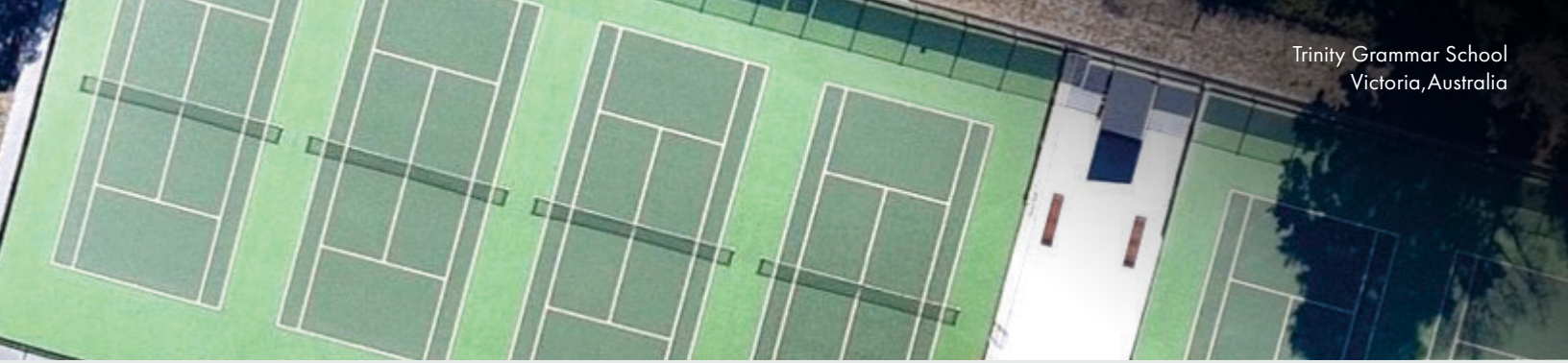


Ballam Bumps Play Space,
Frankston, Australia

REBOUND ACE[®] SURFACES ARE AVAILABLE IN THESE ITF COURT PACE RATING CATEGORIES

They can also be customized based on your personal preferences.





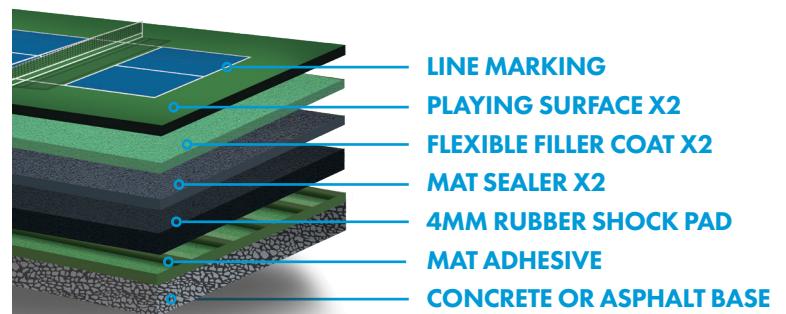
PIBA Pickleball
Bavaria, Germany

REBOUND HSA MAT SYSTEM

Find the perfect balance between performance and comfort. Utilising a 4mm rubber mat, Rebound HSA allows athletes to play competitively on a gentle, cushioned surface designed for player wellness.

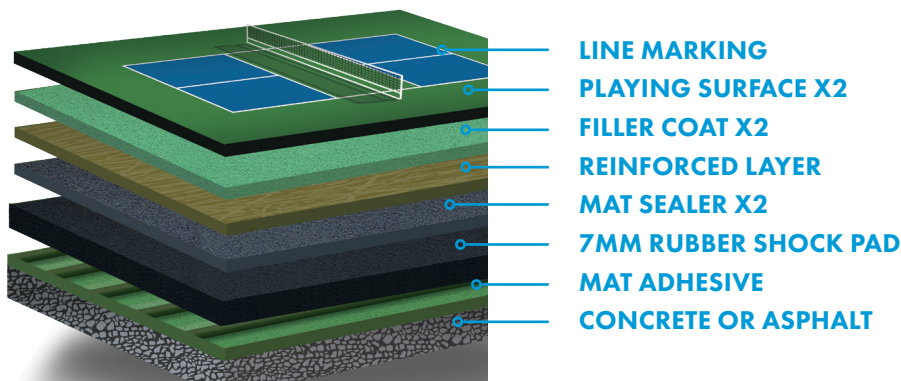


Mountain Creek Secondary College
Brisbane, Australia



REBOUND GS8 MAT SYSTEM

Best for vigorous, frequent play, this 7mm rubber shock pad offers the ultimate in cushioned comfort and shock absorbency. Choose any of our 12 vibrant Synpave Ultra Top Coat colors to personalize your project.



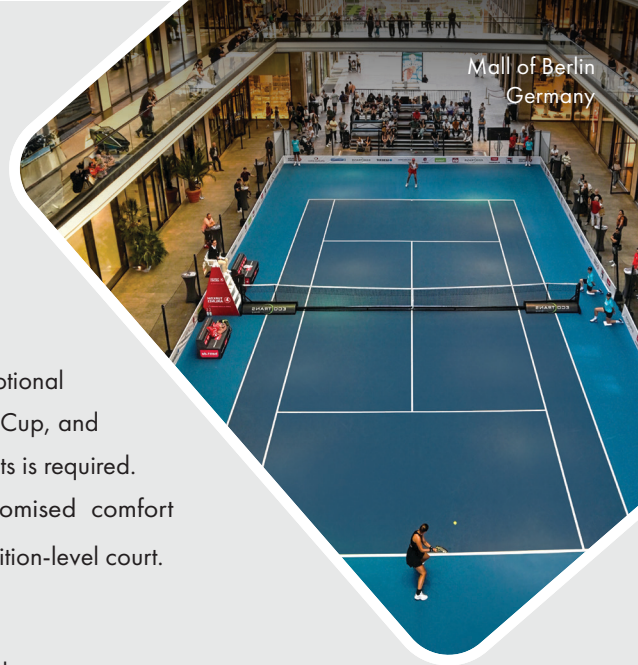
ENDLESS POSSIBILITIES FOR YOUR PROJECTS

REBOUND PORTABLE*

Rebound Ace Portable court is the leading choice for elite level and promotional tennis events. It is consistently chosen for the Fed Cup, Davis Cup, Laver Cup, and WTA Championships where fast turnaround to accommodate other events is required. Our portable, pre-coated, interlocking system provides uncompromised comfort and cushioning. In just a few hours, a small crew can assemble a competition-level court.

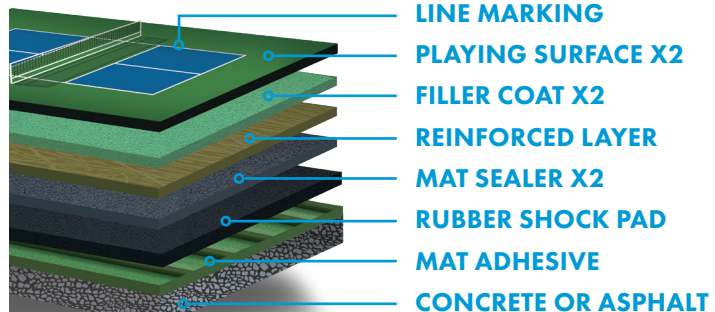
REBOUND PRO CUSHION*

A liquid rubber cushion takes performance and durability to the next level.



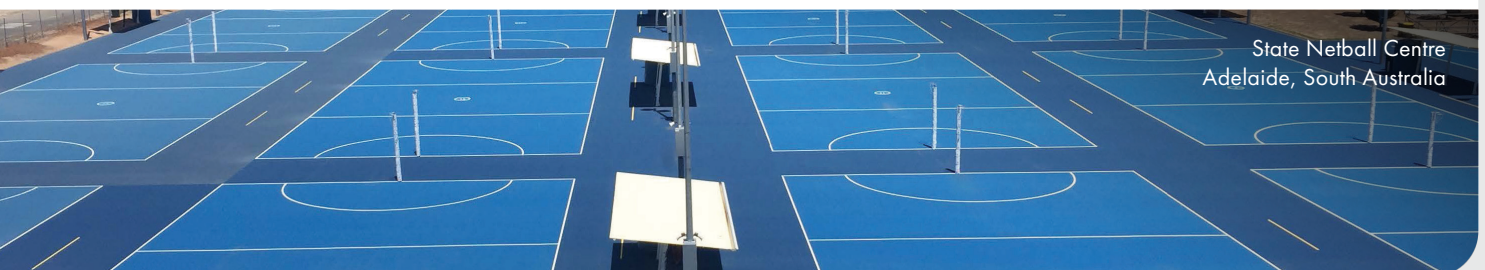
REBOUND AIR CUSHION MAT SYSTEM

Best for rooftops and surfaces with expansion joints, intuitive cushion technology alters padding where subsurface movement is predicted.



SYNPAVE

Easy and affordable, Synpave is compatible with almost any sport. From pickleball to tennis to netball — this versatile surface is available in a variety of vivid, UV-stable hues that can withstand even the harshest weather conditions without fading or degrading.



* Not available in North America



Our Australian manufacturing facility has successfully achieved and maintain ISO 9001:2015 Quality Management, 14001:2015 Environmental Management and 45001:2018 Safety Management systems.



OUR COMMITMENT TO QUALITY

Since 1953, California Sports Surfaces has set the industry standard, providing customers globally with a premier offering of acrylic surface systems.

From professional tournaments to neighborhood courts, CSS and its iconic brands – DecoTurf®, Plexipave®, Rebound Ace®, CoolTop®, Plexitrac®, and Premier Sports Coatings® – deliver cutting-edge surface technology that meets the demands of athletes at every level. CSS is dedicated to evolving the game of play through innovation, performance, and unmatched quality.

TO LEARN MORE ABOUT OUR PRODUCTS, PLEASE VISIT
CALIFORNIA SPORTS SURFACES.COM

United States: 150 Dascomb Rd., Andover, MA 01810 • Phone 978.623.9980
Australia: 67 Assembly Drive, Tullamarine, Victoria, 3043 • Phone (Toll Free) 1800 786 617 • In Australia: +61 3 9338 9851

www.icpgroup.com
©2025 ICP Group



Part# 916-99 1.21.25